

Finding Articles: Using metaLINK

metaLINK is the Libraries' gateway to locating articles of all types (journal, magazine, newspaper) via the online databases we subscribe to. Visit the Tutorials page (<http://library.lib.binghamton.edu/media/>), to view a short, online tutorial demonstrating how to find articles. If you have any questions about finding the articles you need, just Ask a Librarian (<http://library.lib.binghamton.edu/webdocs/askalibrarian.html>).

Choosing an Appropriate Database

On the Find Database by Title page of metaLINK, you can search for the name of a specific database. Alternately, you can browse for databases by subject. Or try "Places to Start" for general, multidisciplinary databases.

In most cases, you will want to look up the subject databases that best match the course you are taking. Keep in mind you might need to look in a few places. For example, if you are taking a class on Latin American History, you will probably want to look at the databases under Area Studies (Latin American and Caribbean Studies) and under History (Latin America). If you have questions about which database subjects might best suit your research needs, Ask a Librarian.

Using CrossSearch to Search Across Multiple Databases

CrossSearch allows you to conduct a keyword search across a number of different databases held by the Libraries.

Choose databases to search from the drop-down box on the left. You can choose one of several Quick Sets, which have been created by librarians for commonly requested subjects or try Subjects, then select the appropriate subject area. Once you choose your Subject and Subcategory, you can check off up to 10 databases that you want to search at once. Enter your keywords and start browsing your results.

Getting the Article with

To view a short tutorial on the GetIt@BU button, see the Tutorials page. Some articles may be available online in full-text in the database you are currently searching. In those instances, follow the link indicated in the database to retrieve the full-text as a PDF or HTML format.

If the full-text of the article is not available in that database, click on  :

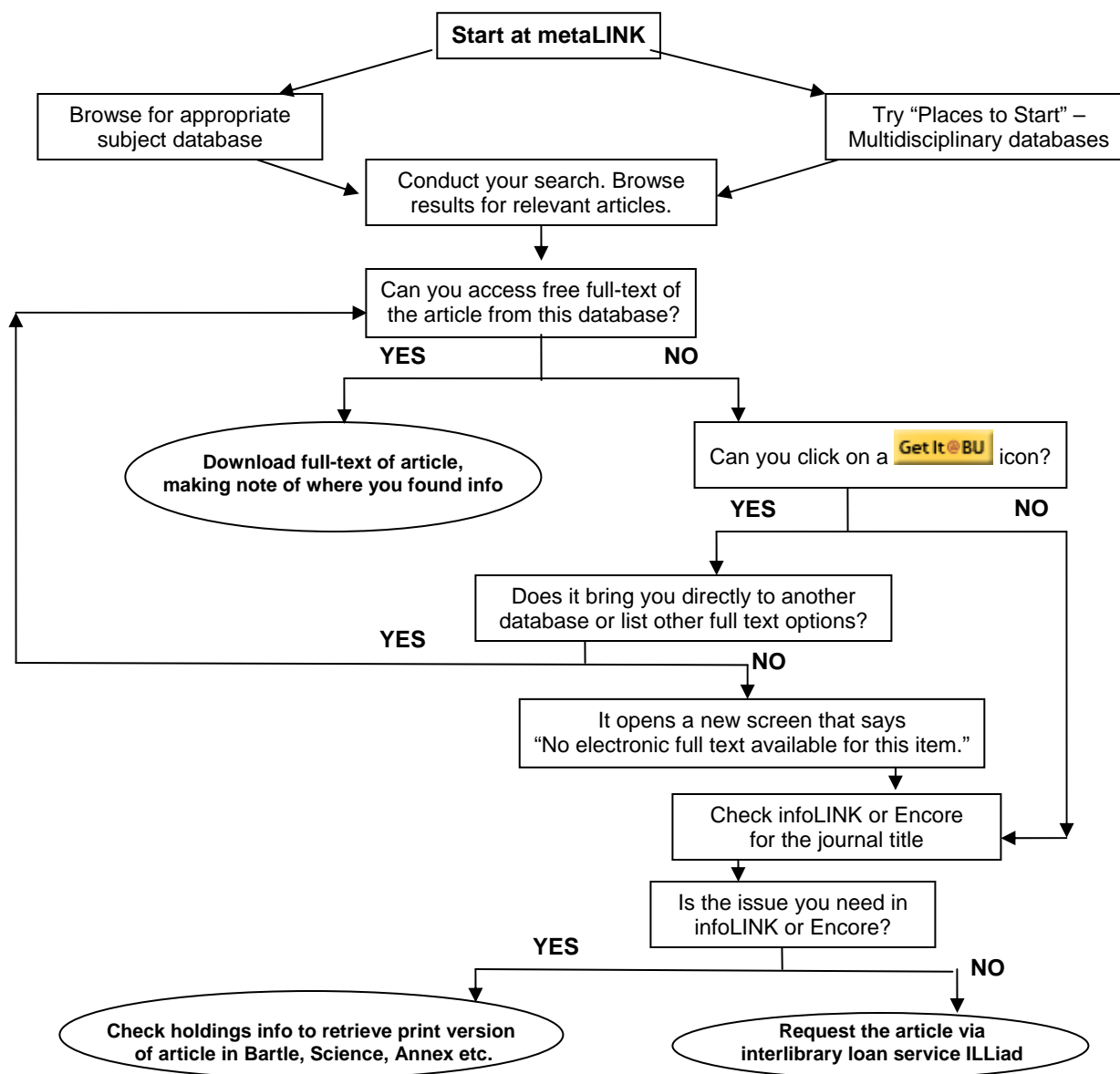
- It might open up a new window to a new database with the full-text attached.
- Or you might get see "No electronic full text available for this item," in a new window. Then, you should check the library catalog infoLINK to see if the Libraries have the issue of the journal that you need.
- If after checking the catalog, the Libraries do not own the issue you need, you can request a copy of the article via our interlibrary loan service ILLiad (<http://illiad.lib.binghamton.edu/>).

Checking the Library Catalog (infoLINK and Encore)

Once you have your article citations, look up the journal title in the library catalog using either infoLINK or Encore. Remember to search for the journal title, not the article title.

Once you locate the journal, click on the title to see the Full View of the Record. Then click on Availability. This information tells you where you can find specific issues (Bartle, Science, Newcomb, Fine Arts, UDC, Annex). For more location information, view the Floor Maps (<http://library.lib.binghamton.edu/webdocs/FloorPlans/floorplans.html>).

Most issues published before 1980 are now housed in the Annex. Follow the instructions online to have the journal delivered to the library. You will need to sign in to infoLINK.



More Advanced Options

To learn more about the advanced options for using metaLINK, such as choosing databases from different categories for the CrossSearch, or setting up an alert system that lets you know when new articles in your field are available, check out the Help function, or Ask a Librarian.